

# COVID-19 Symptom & Quarantine Decision Forest for K-12 Schools

The Decision Forest is based on guidance from the California Department of Public Health and local recommendations from Sacramento County Public Health. It is updated regularly to align with evolving guidance. Schools should ensure they are using the latest version and discard all previous versions. The Decision Forest provides general guidance for common scenarios, but cannot account for every possible situation. Schools requiring technical assistance can contact the SCPH Schools Team for guidance at [SCPHschools@sacounty.net](mailto:SCPHschools@sacounty.net).

## TREE #1: STUDENT OR STAFF WITH SYMPTOMS

Student or staff has any of the following **NEW** symptoms:

- Fever or chills
- Cough
- Shortness of breath or difficulty breathing
- Fatigue
- Muscle or body aches
- Headache
- New loss of taste or smell
- Sore throat
- Congestion or runny nose
- Nausea or vomiting
- Diarrhea

**Exclude from school.**

Did the person have COVID-19 within the last 90 days?

**YES**

**CONTINUE TO TREE #4**

**NO**

**EITHER**

**Test\*** for COVID-19.

Receive an **alternative named diagnosis** from a health care provider.

If no test or alternative diagnosis, **exclude** for 10 days from symptom onset. May return on Day 11 if at least 24 hours have passed since fever and symptoms have improved significantly.

**POSITIVE**

**NEGATIVE**

### ISOLATION:

Individual must **isolate** at home. May return to school on Day 11 after symptom onset if at least 24 hours have passed since fever and symptoms have improved significantly. Isolation period may **NOT** be shortened due to subsequent negative test results.

May return to school if at least 24 hours have passed since fever and symptoms have improved significantly.

### CONTACT TRACING:

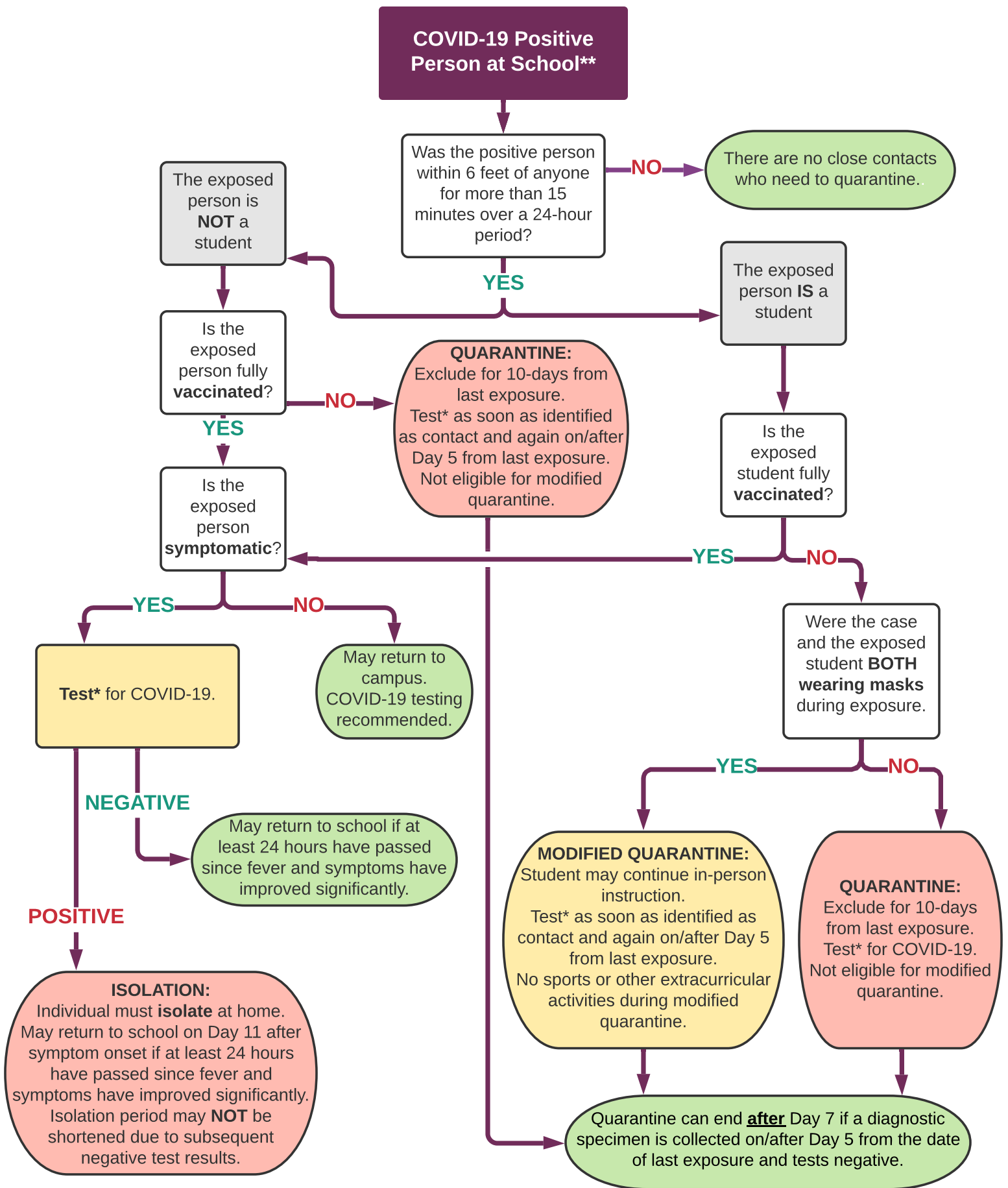
Identify all close contacts (>15 minutes within 6 feet of COVID-19 positive individual in 24 hour period) starting 48 hours before case symptom onset (or positive test if asymptomatic), follow quarantine guidance on Tree #2, and report to SCPH.

**CONTINUE TO TREE #2**

\* PCR or rapid antigen testing are acceptable testing methods. Negative rapid antigen test only requires confirmatory PCR on patient with loss of taste or smell.

\*\* School setting in which students are supervised by school staff, including indoor or outdoor school settings and school buses.

## TREE #2: COVID-19 POSITIVE PERSON AT SCHOOL\*\*

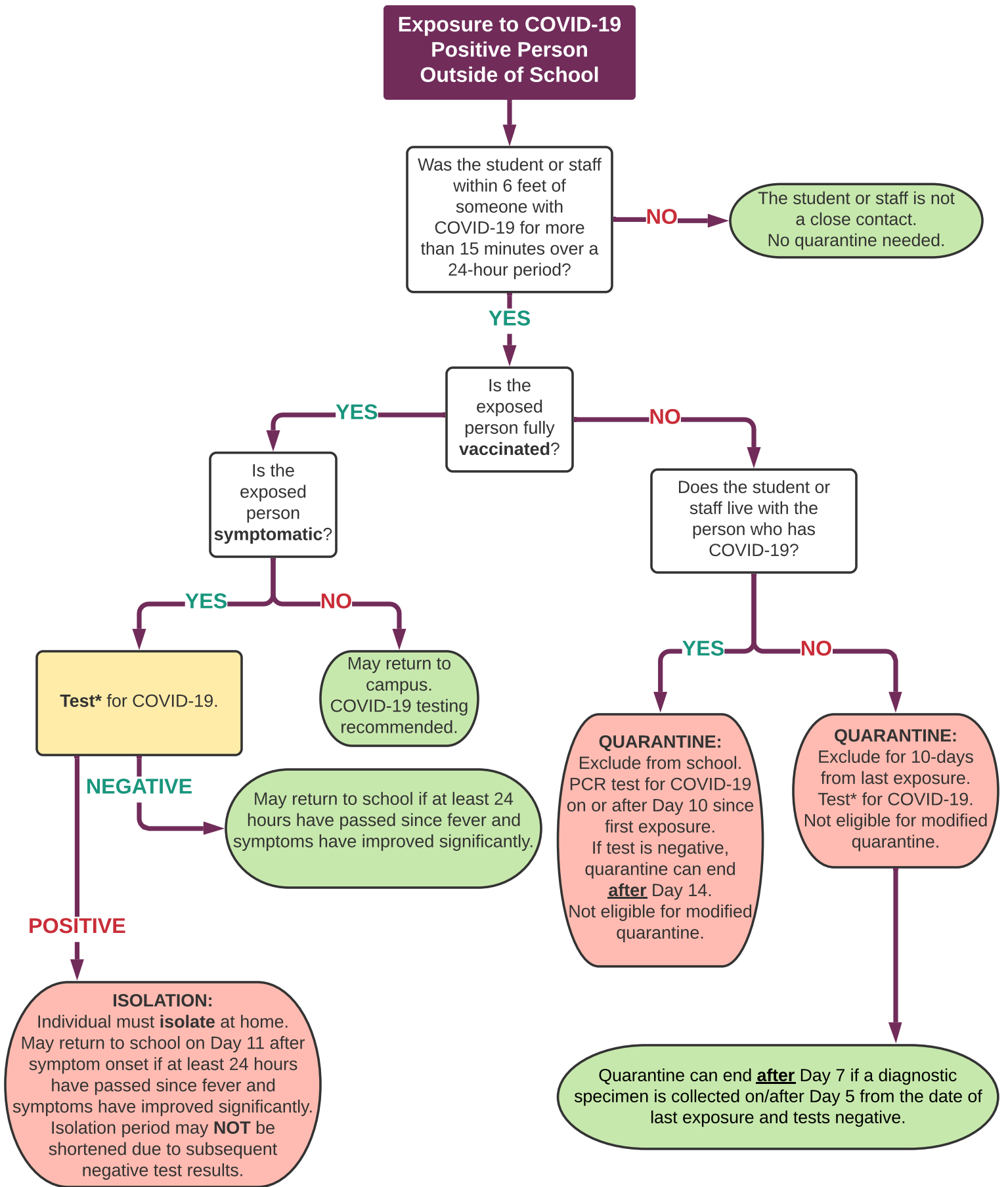


\* PCR or rapid antigen testing are acceptable testing methods. Negative rapid antigen test only requires confirmatory PCR on patient with loss of taste or smell.

\*\* School setting in which students are supervised by school staff, including indoor or outdoor school settings and school buses.

Please note: Asymptomatic individuals who had COVID-19 in the past 90 days do not need to quarantine if identified as a close contact.

# TREE #3: COVID-19 POSITIVE EXPOSURE OUTSIDE OF SCHOOL



\* PCR or rapid antigen testing are acceptable testing methods. Negative rapid antigen test only requires confirmatory PCR on patient with loss of taste or smell.

\*\* School setting in which students are supervised by school staff, including indoor or outdoor school settings and school buses.

Please note: Asymptomatic individuals who had COVID-19 in the past 90 days do not need to quarantine if identified as a close contact.

# TREE #4: PERSON WHO TESTED POSITIVE FOR COVID-19 IN PAST 90 DAYS

Student or staff who tested positive for COVID-19 in last 90 days has any of the following **NEW** symptoms:

- Fever or chills
- Cough
- Shortness of breath or difficulty breathing
- Fatigue
- Muscle or body aches
- Headache
- New loss of taste or smell
- Sore throat
- Congestion or runny nose
- Nausea or vomiting
- Diarrhea

